

With its developing economy, Turkey is becoming one of the major centers of world economy. Global enterprises prioritize Turkey in their investment decisions and gain advantages thanks to elements such as Turkey's geographical location, natural resources, and trained labor force.

Trained labor force; land-sea-air transport with multiple alternatives; proximity to metropolises and many such advantages underline Balıkesir in hosting sustainable investments. This work aims to promote current investment environment in order to enable Balıkesir to take a bigger role in Turkey, which is becoming a center of attraction with new investments.

This guide focuses on Agriculture sector in detail, and lists the advantages for investors in Balıkesir. A series of advantages are given in detail and analyzable fashion, from potential opportunities of Balıkesir in agriculture to logistics opportunities, from regional incentives by Ministry of Industry and Technology to local contributions the South Marmara Development Agency provides.

Apart from this Investment Guide for Agriculture, other provincial investment guides also are prepared for Industry, Tourism, Energy and Mining sectors and presented to the service of potential investors. In addition to these, South Marmara Development Agency also provides support services with its technical infrastructure and its expert staff, and supports all investments in Balıkesir as a solution partner.

While we hope that this Guide proves useful to you; we would like to inform you that you can always benefit from the extensive support services our Investment Support Office gladly provides in order to help you realize your investments.



## **Balikesir, Center of Agriculture**

Balikesir shows an understanding that accelerates the renewal and transformation of the region by matching its potential resources with investors. Strong agricultural resources influential in this understanding serve directly to the goal of development. Wide and fertile agricultural lands and favorable climate in the province increase agricultural product variety. Wide meadows of the province suitable for agriculture have influenced the development of bovine and ovine breeding. Furthermore, Balikesir holds a potential for development for new investment branches in agriculture sector with its spreading organic farming and good agriculture practices. Thanks to its climate, irrigation opportunities and long harvest season Balikesir also has advantages for seed growing.

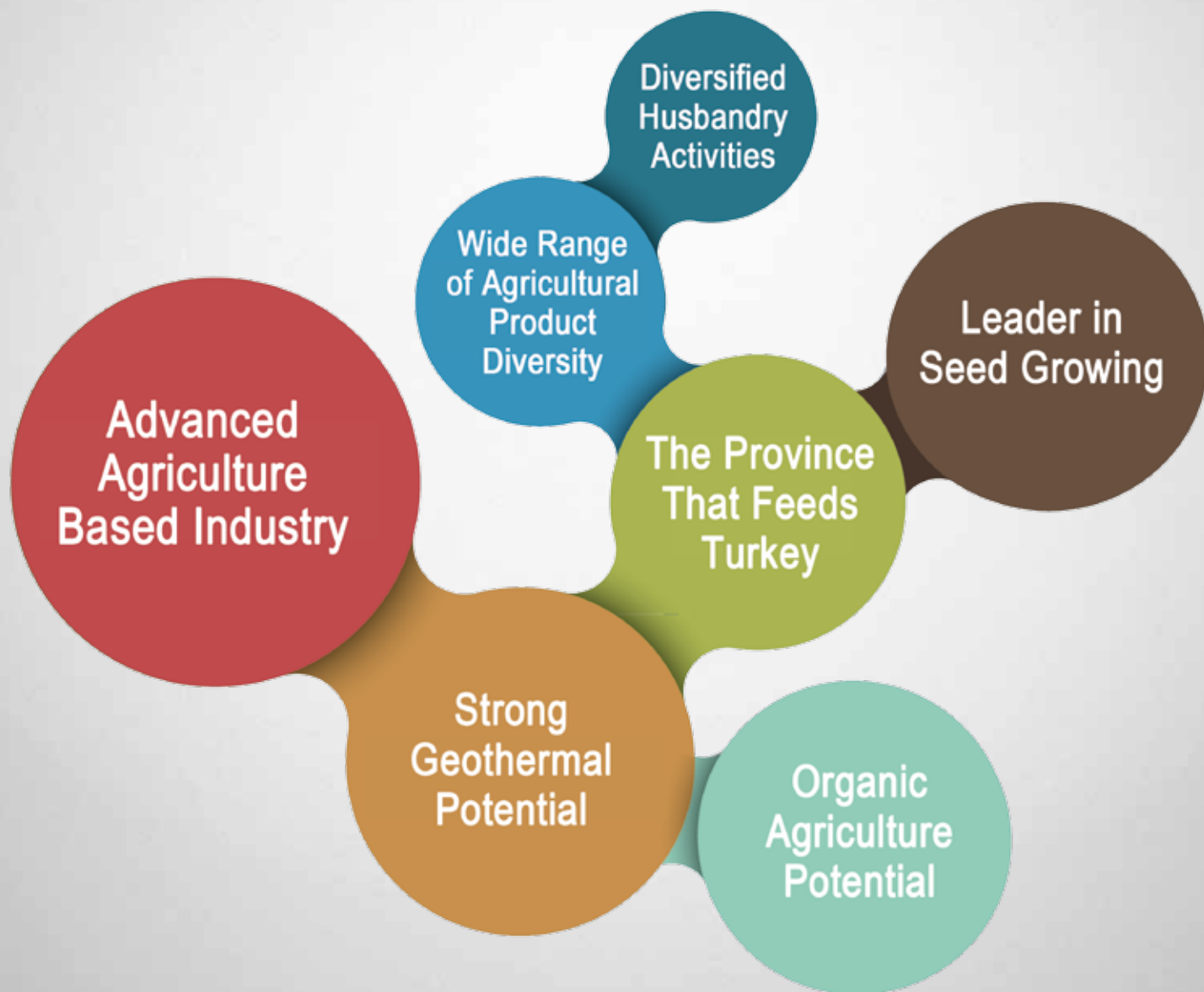
Thanks to its geographical location, Balikesir is an attractive option for any investment due to its proximity to big consumption centers; while the province has an attractive investment environment for feedstuff and poultry raising in particular.

Having coasts both on Marmara and Aegean Seas, the province has a rich marine flora and fauna. Consequently, the province has facilities processing marine products with modern methods.

Commonly found geothermal resources bring different production styles in agricultural practices that is contributing to the increase in profitability and added values in the sector.

Presence of developing beekeeping activities and medicinal aromatic plants, thanks to the rich natural environment of Balikesir, gives a new breath to the sector.

Industrial structure based on agriculture developing with this strong profile makes Balikesir a brand city in the sector.





## Agricultural Product Range of Balıkesir

Balıkesir is an agricultural province with its geographical structure and climate conditions. With its fertile agricultural lands, Balıkesir has the strategic location for easily marketing agricultural products. Inspection of the distribution of investments reveals that the dominant sector is agriculture with a share of 64%.



### Sectoral Distribution Balıkesir

**64%**

**AGRICULTURE**

**29%**

**SERVICES**

**7%**

**INDUSTRY**

**5,600 TONS**  
OF ORGANIC  
PRODUCTS

**15,000,000**  
FRUIT TREES

ANNUALLY  
**150,000 TONS**  
OF OLIVE

ANNUALLY  
**240,000 TONS**  
OF FRUIT

**5,900 TONS**  
OF MARINE  
PRODUCTS

**90**  
DIFFERENT  
SEEDS

**540,000**  
BOVINES

**1,190,000**  
OVINES

**33,200,000**  
POULTRY

**173,000**  
BEE HIVES

ANNUALLY  
**835,000 TONS**  
OF VEGETABLES

## Agricultural Product Range of Balıkesir



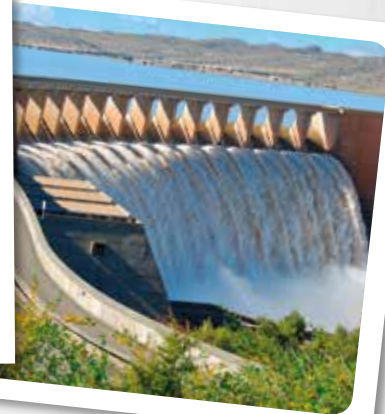




## Leader Province in Agricultural Production

Balikesir has a very favorable climate and soil for the cultivation of various fruits and vegetables.

The agricultural lands of the province consist of approximately 254,000 hectares of farm lands and 83,000 hectares of olive farms. A total of 9 dams and 35 ponds serve for irrigation for agricultural activities and 8 irrigation projects are operational.



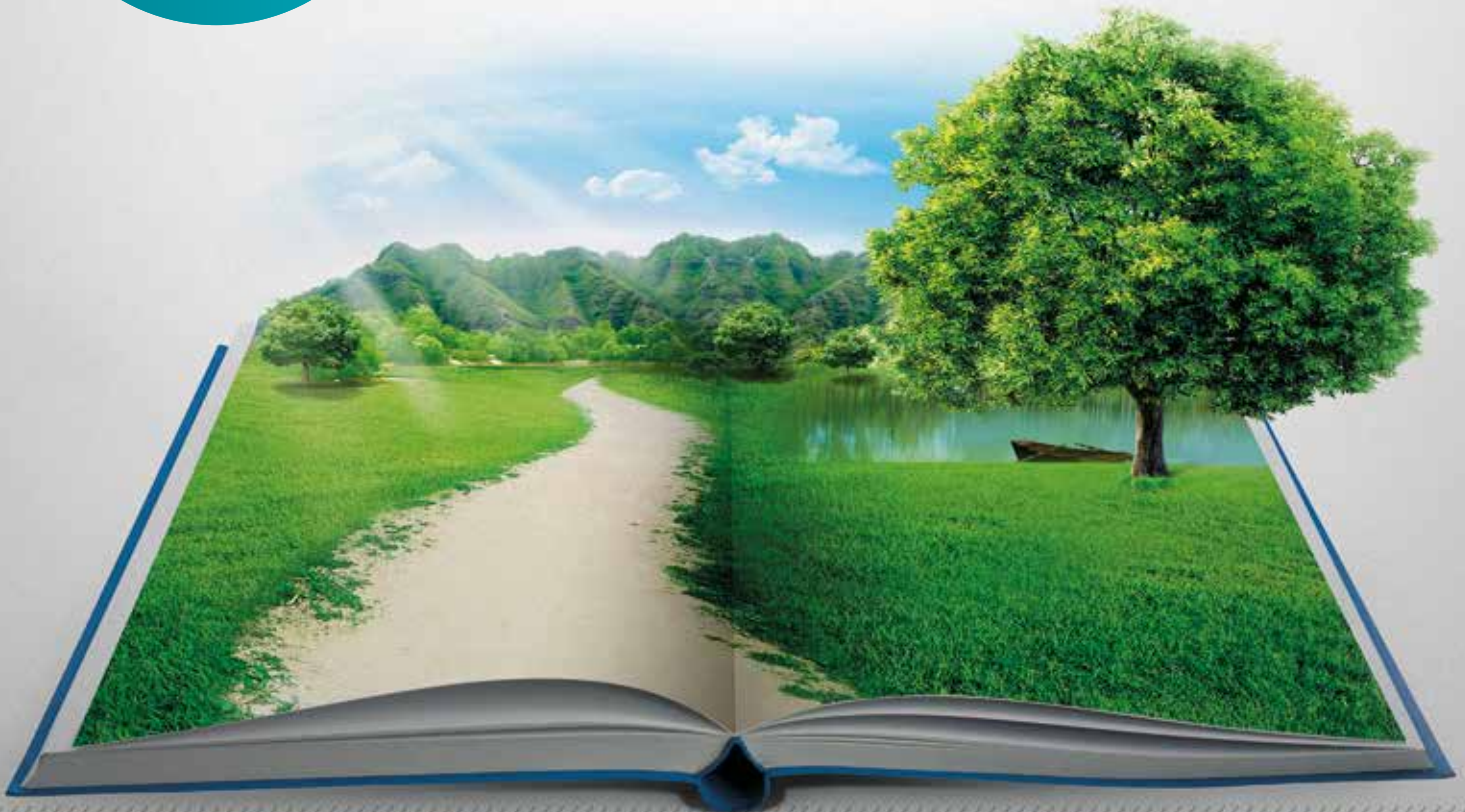
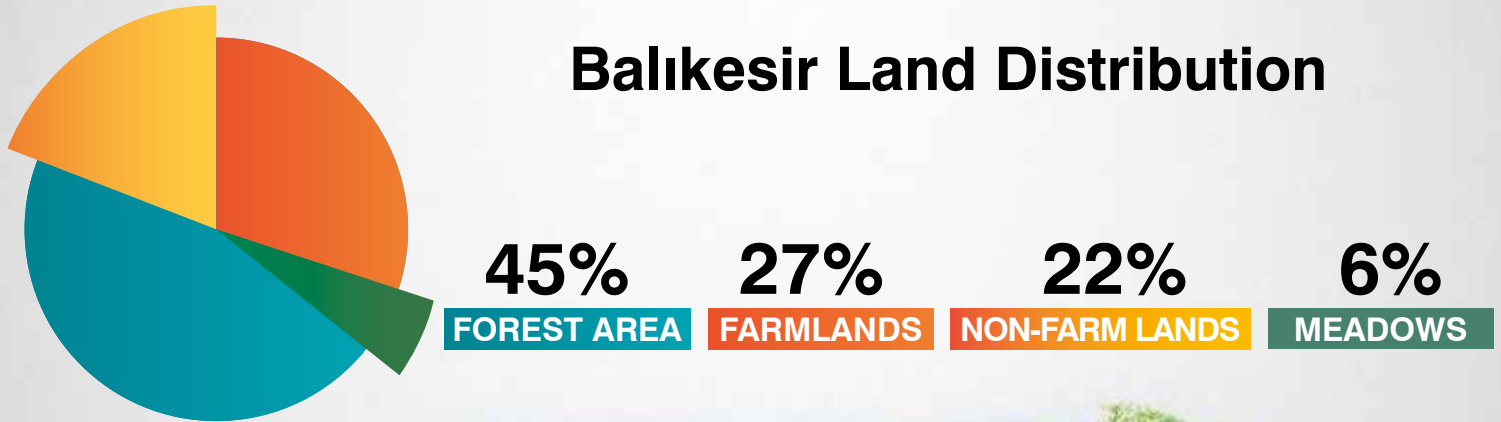
**254,000** hectares  
of Irrigable Land

**35**  
Ponds

**9**  
Dams

## Examination of Balıkesir Lands

1,447,000 hectares of total lands in Balıkesir are broken down into 649,000 hectares of forestry, 394,000 hectares of farmlands, 322,000 non-farm lands and 82,000 hectares of meadows.





## Leader in Vegetable Production



Balikesir is the leader in **Wheat** (Green)  
and **Rye** production



**Broad Bean**  
**Pea**

**Oat (Green)**

**Sorghum**

**Common Vetch**



**Corn (Silage)**  
**Paddy**



**Corn (Vetch)**  
**Triticale**  
**Fodder Turnip**  
**Black-eyed Pea**



**Barley (Green)**  
**Italian Ryegrass**



# Balıkesir Meets the Fruit-Vegetable Demand of Metropolises



## Environment suitable for Fruit and Vegetable Production

A wide variety of fruit and vegetable production take place in Balıkesir. Grown products directly meet the demands of the metropolises. Total fruit production of Balıkesir amounts to 240,000 tons. The largest share of this production belongs to olives with 150,000 tons. Fruits widely grown in the province are grapes, apples, tangerines, cherries, peaches and walnuts. Vegetable production amounted to 835,000 tons with tomatoes taking the lead with 420,000 tons.

**420,000 tons**  
**Tomatoes**

**71,000 tons**  
**Pepper**

**51,000 tons**  
**Eggplant**



**Dill**

**Broad Bean**

**Pepper (Sweet Green)**

**Aubergine**

**White Radish**



**Parsley**

**Asparagus**



**Olive**

**Tomato (Paste)**

**Red Beet**

**Cucumber (Pickling)**

**Fresh Garlic**



**Kochia**

**Okra**



**Leek**

**Celery**

**Radish**

**Cranberry**





## Homeland of Olive, Balıkesir

Ayvalık, Gömeç, Burhaniye, Edremit, Havran, Erdek and Bandırma are the most important olive and olive oil production centers of Turkey.

“Edincik Su” in Bandırma Bay and Erdek region and Edremit oil olives are grown in Bay Area. “Ayvalık Olive Oil”, “Edremit Olive Oil”, “Edremit Bay Area Olive Oil” and “Edremit Bay Green Scratched Olives” geographical indications has been registered in line with high quality olive industry production goals.

The province hosts olive and olive oil harvest festivals in olive harvest season each year.



## Balıkesir for Natural and Healthy Nutrition



### 5,600 Tons of Organic Production on 28,000 Decares of Land

Organic agriculture is an important agricultural activity for protection of natural resources and ensuring sustainability of agricultural activities. 5,600 tons of production are carried out in organic agriculture which has become more important recently. Organic agriculture is spread over 28,000 decares and grows each day with continued investments. Main products of the organic agriculture in the province are; hashish, wheat, oat, tomato, olive, pistachio, cherry, walnut, bean, apple, strawberry and thyme.

Good agriculture practices are common in Burhaniye, Bandırma, Gönen, Gömeç, Ayvalık, Havran, Edremit, İvrindi, Manyas and Bigadiç counties, on over 189,000 decares of land. Products obtained from good agricultural practices are mainly; tomato, olive, apple, cherry, pear, nectarine, mandarin, fig, pea, potato, pomegranate, okra and aubergine.







## High Quality Seed Production in Balıkesir

Climate, irrigation opportunities and long harvest season in Balıkesir create advantages for growing seeds. Seed production is spread over 33,500 decares, mostly based on certified wheat, barley, oat, triticale, paddy, sunflower, corn and forage crops. Over 90 different standard vegetable seeds, mainly tomato, pepper, eggplant, roquette, dill, parsley, melon and onion are grown in the province. Seed production is mainly focused in Ayvalık, Karesi, Susurluk, Gönen, Manyas and Bandırma counties.

**Bandırma**

**Ayvalık**

**Karesi**

**Susurluk**

**Manyas**

**Gönen**



## Medicinal Aromatic Plant Production



Medicinal aromatic plants are used to add aroma to food, to increase shelf life and in medicine and pharmacy for their healing properties. With the increased interest in herbal medicine, organic and natural food, especially in the developed countries, have brought growing and processing medicinal and aromatic plants without losing their properties under spotlight.

Defoliation facilities to be built for improvement of marketing opportunities by extending shelf life of the products of the province which increase medicinal aromatic plant production capacity each passing day strike out as a significant investment opportunity.

Edremit, Havran, İvrindi, Dursunbey, Bigadiç and Sındırgı counties along with Marmara Island are prominent locations in aromatic plant production.

**Edremit**

**Havran**

**Marmara**

**İvrindi**

**Bigadiç**

**Sındırgı**

**Dursunbey**





## Developing Forestry Activities

Balıkesir is developed also in forestry activities along with agriculture and husbandry. The province has forests spread over 649,000 hectares and ranks 5th in Turkey in terms of forest area. The forests have larch, Turkish pine, beech, alder, oak, willow, tamarisk and plane trees.

In forestry activities Dursunbey, Balya, Sındırgı, Savaştepe and Burhaniye counties come into prominence. There are also furniture and lumber factories operating in the province connected to forestry activities. Balıkesir ranks 2nd in fiber-chip and fuel wood, 4th in pulpwood and 3rd in total wood production.

**Tamarisk • Plane Tree • Hornbeam • Calabrian Pine • Beech • Larch • Oak • Willow**





## Rising Star in Ornamental Plant Cultivation

Balıkesir is diversifying its activities in agricultural production with ornamental plants. Being among the dynamic provinces in flower bulb cultivation, Balıkesir has taken the 1st rank in flower bulb production area in Turkey. An ornamental plant specialised organised industrial zone in Edremit county will be operational in 2020.

### Indoor Ornamental Plants

**14,000 m<sup>2</sup> 400,000 pcs**

### Flower Bulbs

**320,000 m<sup>2</sup> 5,400,000 pcs**

### Outdoor Ornamental Plants

**200,000 m<sup>2</sup> 880,000 pcs**

Ornamental plant cultivation in Balıkesir is dense in especially in Burhaniye, Karesi, Gönen and Kepsut counties. Burhaniye has wide cultivation of heartsease, ornamental cabbage, chinese pink, rosea, ivy geranium.



Balıkesir is **1<sup>st</sup>** in Flower bulb cultivation in Turkey



## Greenhouse Cultivation in Balıkesir

Balıkesir focuses on lettuce, cucumber and tomato production in greenhouse cultivation. In the province, high tunnels and plastic greenhouses are common in greenhouse cultivation. Using plastic greenhouses, indoor and outdoor ornamental plants are produced in Burhaniye county.

Greenhouse cultivation is widespread in Altıeylül, Burhaniye and Sındırgı counties.





## Favorable Environment for Geothermal Greenhouse Cultivation



Hot springs of Balıkesir have suitable temperature and flow for greenhouse cultivation, directing sector investments to this area.

Rich geothermal sources of the province lower heating costs which makes investment environment more attractive.





## **Animal Feed Production Increases in Wide and Fertile Lands**

Balikesir is among the leading provinces in animal products. Being rich in animal feed, which is a significant cost element for husbandry sector, Balikesir produces over 2,700,000 tons of animal feed each year.





## **Animal Feed Production Increases in Wide and Fertile Lands**



Balikesir has enterprises which lower input costs by both performing their own livestock activities and producing animal feed. Forage corn, vetch (green grass), clover (green grass) and oat (green) are among the major animal feeds used in the region. Altieylül, Karesi, Susurluk, Manyas and Kepsut are major animal feed production centers.

Farmers in Balikesir are able to obtain their animal feed needs with low logistic costs and reasonable lead times thanks to animal feed factories in the province.







## Leader in Husbandry Investments



**in Broiler**



**in Number of  
Merino Sheep**



**in Milk Production**



**in Egg Poultry**



**in Number  
of Bovine**





## Bovine Breeding in Balıkesir



Balıkesir has 3.2% of bovine breeding in Turkey. The province has approximately 540,000 bovines and majority of these are beef cattle.

Wide meadows of the province were instrumental in spread of bovine breeding. Most of the bovines in Balıkesir are cultivated breeds.

Dairy breeding is more prominent in Altıeylül, Bigadiç, Karesi, Gönen, Susurluk and İvrindi counties while meat breeding is prominent in Susurluk, Bigadiç, Altıeylül and Karesi counties.

Breeding enterprises also produce coarse fodder due to rising animal feed prices.

### Balıkesir Milk Production





## Ovine Breeding in Balıkesir

Balıkesir also boasts ovine breeding activities. In terms of the number of ovine animals province has 2.6% of all sheep and goats in Turkey. Balıkesir has 315,000 sheep (merino), 690,000 sheep (indigenous), 185,000 goat. With this figures the province has approximately 1.2 million ovine animals.

The “Balıkesir Sheep Meat”, which is famous for its qualified meat’s delicious taste, is very popular. Ovine breeding is prominent in Altieylül, Karesi, İvrindi, Sındırgı and Gönen counties.

There are efforts to establish an ovine breeding specialised organized industrial zone in Balıkesir in near future, the first one in Turkey.

**Sındırgı**

**Dursunbey**

**Altieylül**

**İvrindi**

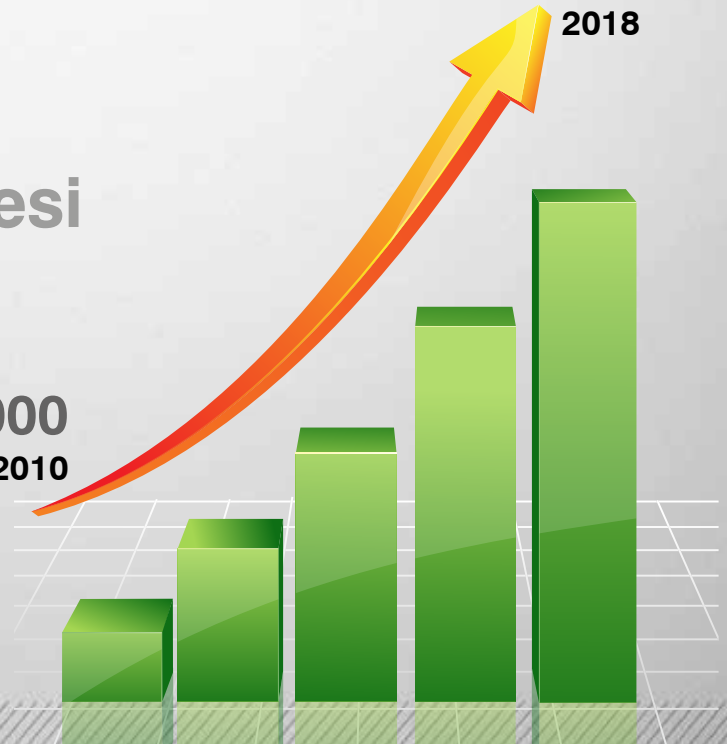
**The number of Small Ruminants in Balıkesir**

**1,190,000**

**2018**

**Karesi**

**790,000**  
**2010**



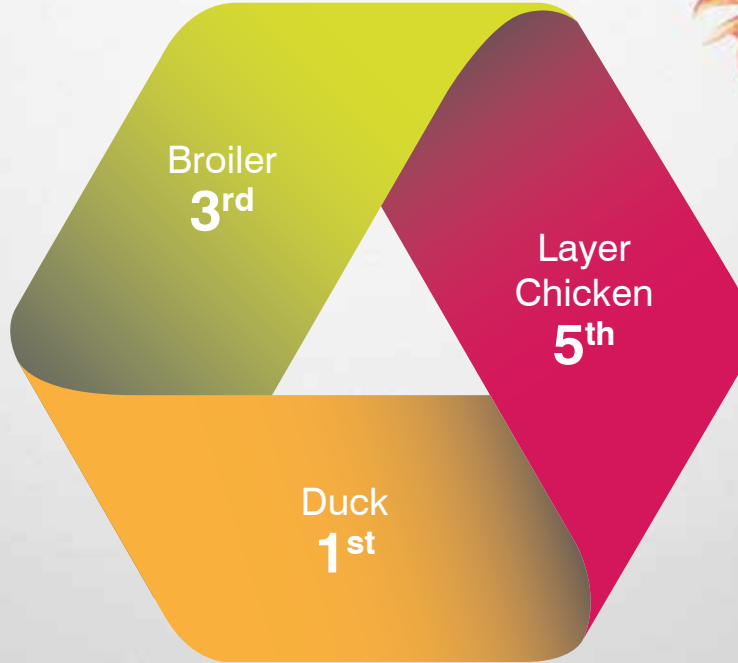
## Poultry Farming in Balıkesir

Poultry farming is an important activity in Balıkesir. Approximately 11.4% of the broilers produced in Turkey are produced in the province. Balıkesir has the 3rd highest number of broilers in the country. Leading white meat producers in Turkey prefer Balıkesir in their investments. Proximity of Balıkesir to large consumption centers is the deciding factor in development of poultry activities in Balıkesir.

Approximately 5.5% of layer chickens are in the Region. Balıkesir has the 5th highest number of layer chickens in Turkey.

Poultry farming is widely performed in Bandırma, Karesi, Altieylül, Manyas, Savaştepe and Bigadiç.

Bandırma  
Altieylül  
Manyas  
Bigadiç  
Savaştepe  
Karesi





## Beekeeping

Intense beekeeping activities in Balıkesir have contributed to the development of side products of beekeeping such as beeswax, pollen, propolis and royal jelly.

Beekeeping is especially prominent in Havran county. The county has the only raw bee honeycomb production facility in the whole Aegean and Marmara Regions. Beekeeping activities are also widely practiced in İvrindi, Edremit, Burhaniye, Gönen and Bandırma counties.

Balıkesir has over 170,000 hives. These hives produce about 2,600 tons of honey each year. Apart from being marketed in domestic markets the honey from these hives are also exported to world capitals such as Paris, London and Amsterdam by local enterprises. With the joint projects of Province Agriculture and Forestry Directorate and Metropolitan Municipality along with support from Agriculture and Rural Development Support Institution, beekeeping is developing rapidly.

Havran

173,000  
HIVES

Gönen

Bandırma

Burhaniye

İvrindi

Edremit

2,600 tons  
HONEY





## Marine Products Diversity in Balıkesir



Having coast in both Aegean and Marmara seas, Balıkesir is rich in fish diversity.

Aegean Sea has red mullet, bream, common sea bream, red coral, annular bream, annular sea bream, scorpion fish, sargo, bronze bream, bothus, white grouper, striped seabream, bass, bluefish, blue mullet, grouper, mackerel, pilchard, pink dentex, mullet, garfish, lizard fish.

Marmara Sea has red mullet, chub mackerel, annular beam, annular seabream, scorpion fish, bothus, bronze beam, bass, blue mullet, mackerel, pilchard and mullet.

In Balıkesir annually 5,900 tons of marine products are produced. Mussel farms of Balıkesir supplies more than 90% of all production in Turkey.

Fishing activities developed thanks to the geographical location of the province, are dense in coastal counties such as Erdek, Marmara Island and Ayvalık. Especially in Marmara Island, canning activities are pursued for any fish caught. Marmara Island also has the largest fish ice plant in Turkey.





## Expanding Agricultural Export Market

Turkey is among the major olive oil exporters and a significant portion of this export comes from Balıkesir, which has over 10 million olive trees.

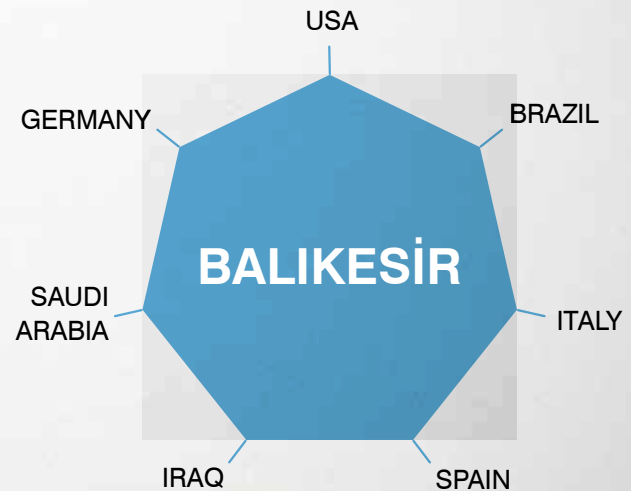
Apart from olive oil and sunflower oil facilities in the province, fruit and vegetable processing plants, flour and animal feed factory have a large share in exports. Animal products on the other hand, lead the export items of Balıkesir.

Balıkesir's Agricultural Export:  
Approximately **\$ 260,000,000**

Animal Products Export  
**\$ 190,000,000**

Fruit and Vegetable Products Export  
**\$ 70,000,000**

### Strong Export Markets of Balıkesir



## Agriculture in Balıkesir is Strong with its Investors



- ▶ Bovine, ovine and poultry breeding facilities
- ▶ Fertilizer production plants
- ▶ Dairy facilities
- ▶ Slaughter house and meat processing plants
- ▶ Egg production and processing facilities
- ▶ Animal feed factories where forage crops are processed
- ▶ Modern olive oil production facilities
- ▶ Oil producing facilities that process industrial oil crop plants
- ▶ Modern fruit and vegetable processing plants
- ▶ Paste factories that process tomatoes of the province
- ▶ Flour factories
- ▶ Paddy processing factories



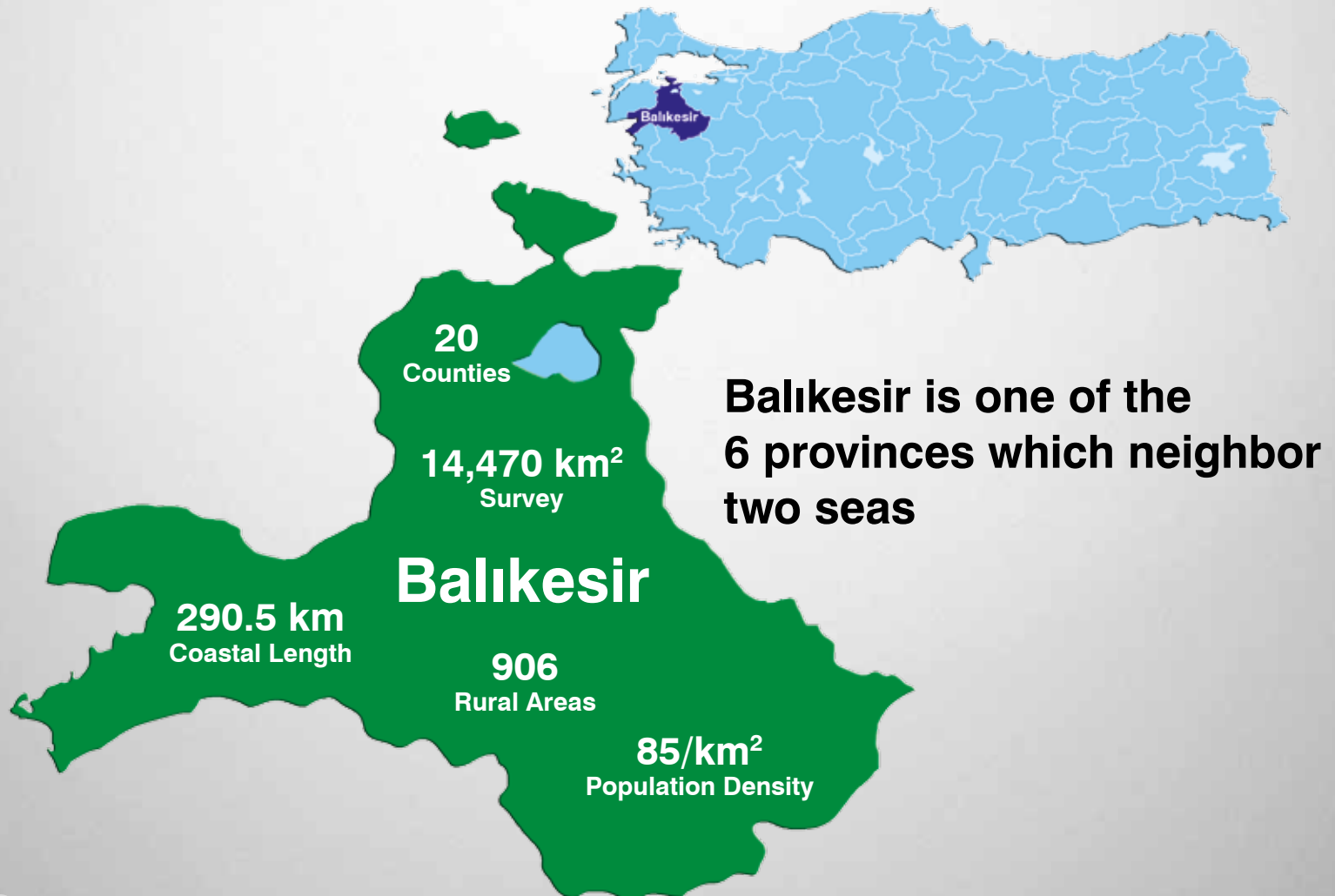




## Geographic Location

Located in the south of Marmara Region, Balıkesir is renowned for its proximity to metropolises such as İstanbul, İzmir and Bursa. It is directly linked to all port cities of Turkey through Bandırma Port, which makes it the crossroads between Turkey and World markets.

Neighboring both Marmara and Aegean Seas makes Balıkesir one of the 6 provinces which neighbor two seas.



## Population Dynamics of the Province

With its population of approximately 1.2 million, Balıkesir has 1.5% of the population of Turkey.

Total labor force of  
**837,517 Persons**

Expected population in 2025  
**1,272,000 Persons**





## Education in Balıkesir

With its education infrastructure, the province has the intermediate staff and qualified labor resources required by all sectors.

Balıkesir University and Bandırma Onyedi Eylül University provide education with 19 faculties.

**The province has 1,100 pre-undergraduate education institutions.**

- ▶ 100% schooling rate in primary schools
- ▶ 90% schooling rate in secondary education



**Education Develops with Universities  
which have over 50,000 students in total**

More qualified generations grow in Balıkesir with education institutions providing vocational education in each county

- ✓ 2 Universities
- ✓ 19 Faculties
- ✓ 5 Graduate Schools
- ✓ 20 Vocational Graduate Schools
- ✓ 94 Departments



## Health in Balıkesir

There are 31 hospitals spread all over the province, 23 of them being public hospitals, 7 private hospitals and 1 research and training hospital. 3 of these hospitals are also dental and oral health centers.

### In Balıkesir

- ▶ 20 Community Health Centers
- ▶ 142 Family Health Centers
- ▶ Integrated Public Hospitals in 4 counties
- ▶ 1 Community Health Laboratory

are in service.

**23**  
public  
hospitals

**7**  
private  
hospitals

**3**  
dental and  
oral health  
centers

**142**  
family health  
centers







An aerial night photograph of a city, showing a dense network of glowing yellow and orange lights against a dark blue and black background. The lights are concentrated in certain areas, suggesting urban centers or industrial zones, and are scattered throughout the landscape, indicating a widespread population or infrastructure.

**Crossroads for Metropoles**

**Strong Logistics  
Infrastructure Advantages**

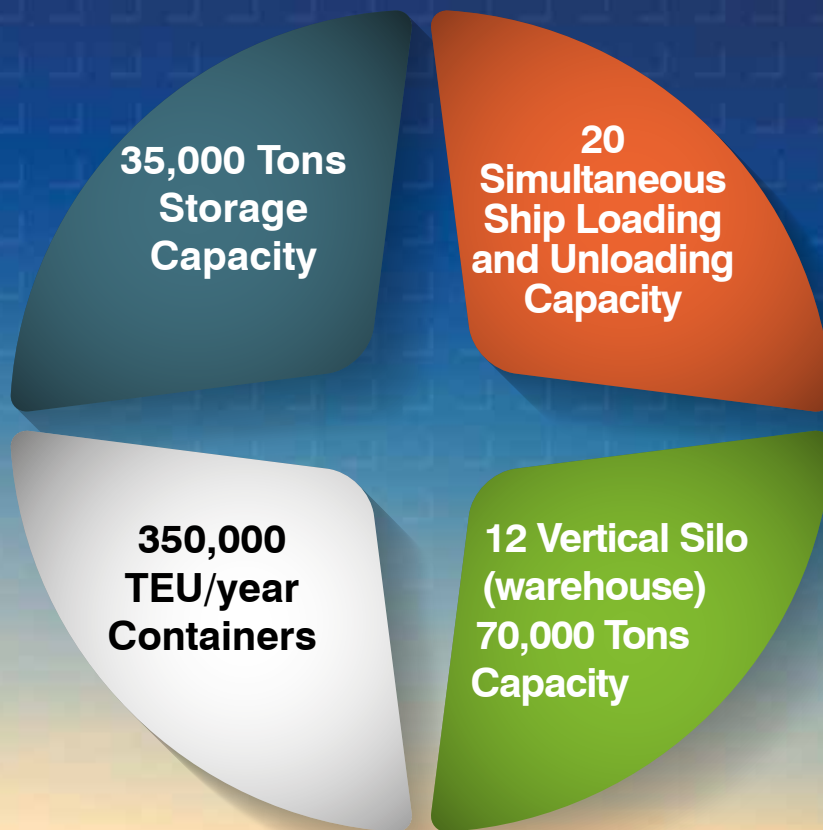
**Total of 27 Million Population  
in Neighboring Provinces...**



# A Strong Port in Product Shipment: “Bandırma”

All kinds of freight can be handled at the Port of Bandırma, which is connected to all the cities of Turkey via railway lines. Direct transportation to Gökköy Logistics Center is possible by rail.

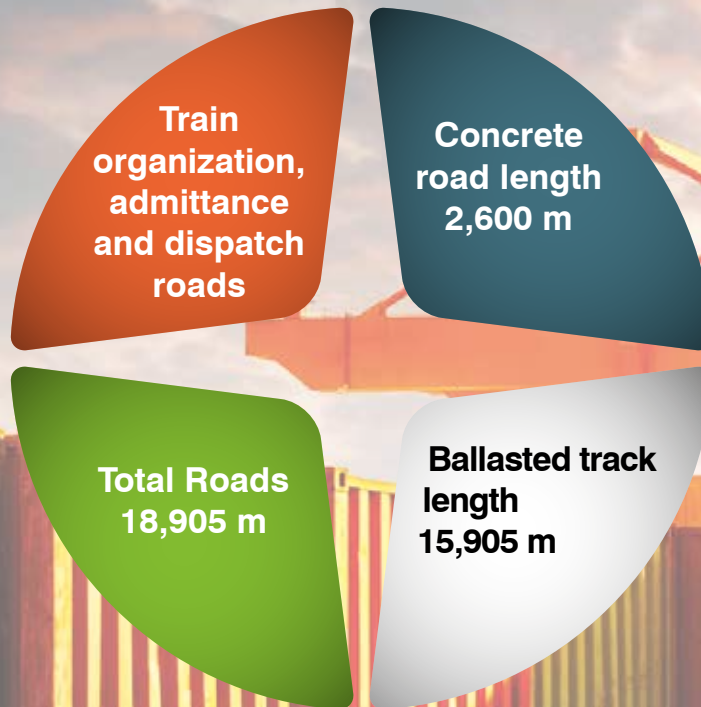






# Gökköy Logistics Center

- Bandırma Port 110 Km
- İzmir Port 230 Km



## GÖKKÖY LOGISTICS CENTER;

- Container loading, unloading, transfer and storage areas
- 211,000 m<sup>2</sup> Operation Area



# Logistics Infrastructure of Balıkesir Grows Each Passing Day

## **Grand Anatolia Logistics Organizations Project (BALO)**

Loads taken from load collection centers in Middle and Western Anatolia, such as Gökköy Logistics Center, will reach load collection center in Bandırma, which is a crossroads, with block trains; then will reach Tekirdağ with train ferries and connect to the international railroad network and reach Europe through linking road newly built between Tekirdağ and Muratlı.

**Block trains leaving Kapıkule border gate will reach logistics centers in Wien, Nürnberg, Stuttgart, Köln and Lyon.**



## Koca Seyit Airport

Built in 1997, Koca Seyit Airport enables transportation from metropolises such as Ankara and İstanbul to every location in Balıkesir.

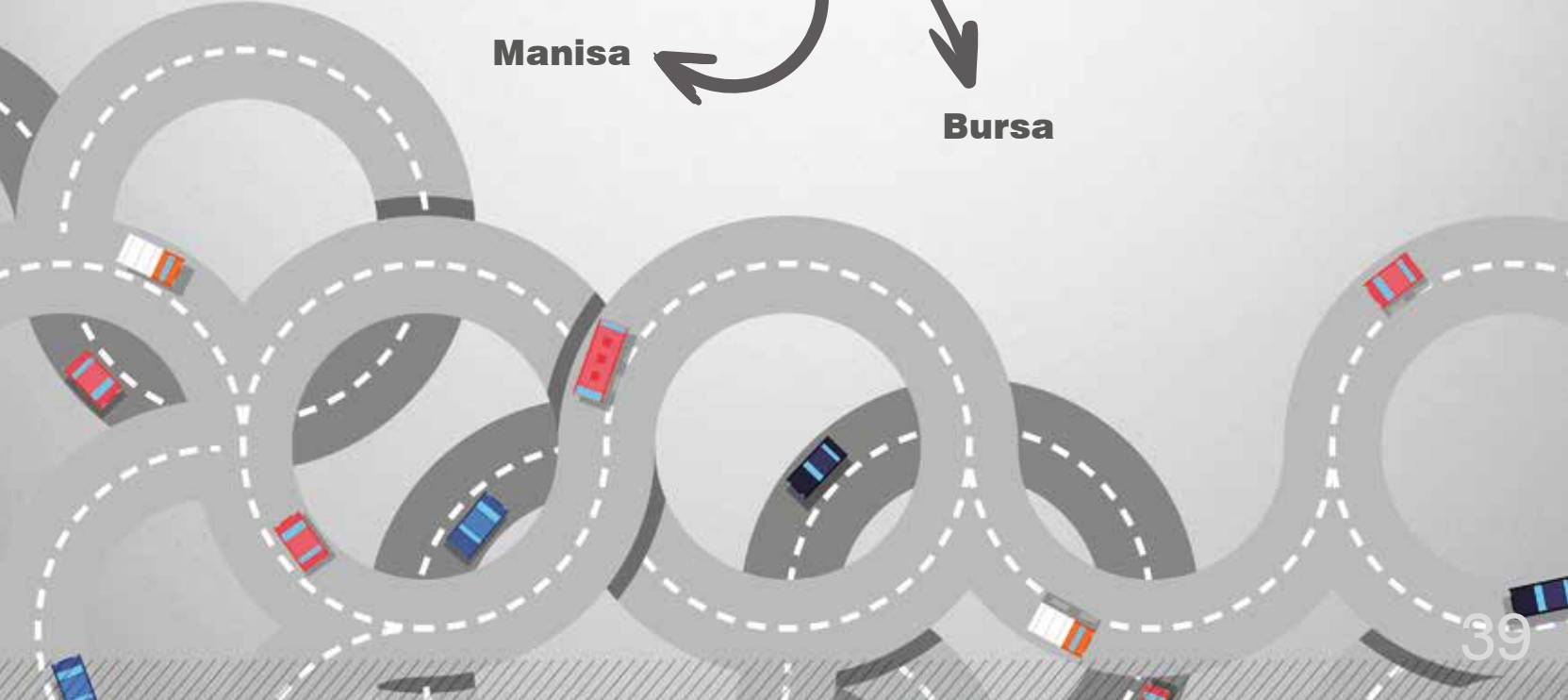
- ▶ **23,600 m<sup>2</sup> terminal**
- ▶ **2 Aprons with capacity of 6 planes**
- ▶ **Quick service with 22 Counters**
- ▶ **Over 20,000 Flights with 150 International Flights**
- ▶ **Over 510,000 Passengers in Domestic and International Flights**
- ▶ **Accessible and Green Airport Certified**



## 4-Hour Transportation Ring



The “4 Hour Transportation Ring”, which will make Balıkesir a Logistics center, will enable traveling around the Marmara Sea in 4 hours; integrate with new transportation projects and together with the BALO project, will facilitate Balıkesir’s open up to Europe.





Europe



## Grand Transportation Projects Connected to Balıkesir

### ► Gebze-Orhangazi-İzmir Highway - Osmangazi Bridge

The highway decreased travel time between İstanbul and İzmir to 3.5 hours and is 433 km long. With Balıkesir located in the center, the completion of the project decreased İstanbul-Balıkesir to 2 hours and İzmir and Balıkesir to 1.5 hours. 2,682 meter long Osmangazi Bridge has a central span of 1,550 meters and is the 4th bridge with largest central span around the world. Entire highway is operational since August 2019.

### ► Tekirdağ-Çanakkale-Balıkesir Highway Project - 1915 Çanakkale Bridge

This project will create routes alternative to Bosphorus crossing for transportation from Aegean and Inner Anatolia Regions to Thrace and Europe.

Connection of Tekirdağ-Çanakkale-Balıkesir Highway to Gebze-İzmir Highway near Balıkesir will create an additional momentum for tourism and other sectors.

### ► Bandırma-Balıkesir - İzmir High Speed Train Project

The project will act as the passenger and cargo line connecting Aegean Region to Europe through Bandırma and Tekirdağ ports. It will also connect to Ankara-İstanbul route on Bursa connection.

### ► Northern Marmara Highway - Yavuz Sultan Selim Bridge

Widest suspended bridge of the world with its 59 meters width and the longest bridge with rail transport on the world with its 1,408 meters of main span.

### ► Bandırma-Bursa-Bilecik High Speed Train Line Project

With the completion of the 215 km project, Bandırma will be connected to Bursa, which is a metropolis with a fully developed industry, through railroad.

### ► Tekirdağ-Çanakkale-Bandırma Road Project

Railroad project that will serve passenger and cargo transport between Bandırma and Çanakkale will start from Bandırma and reach Tekirdağ through Çanakkale, over Biga and Karabiga, covering Bandırma Organized Industrial Zone and Gönen Organized Industrial Zone.

### ► Bay Light Rail System Project

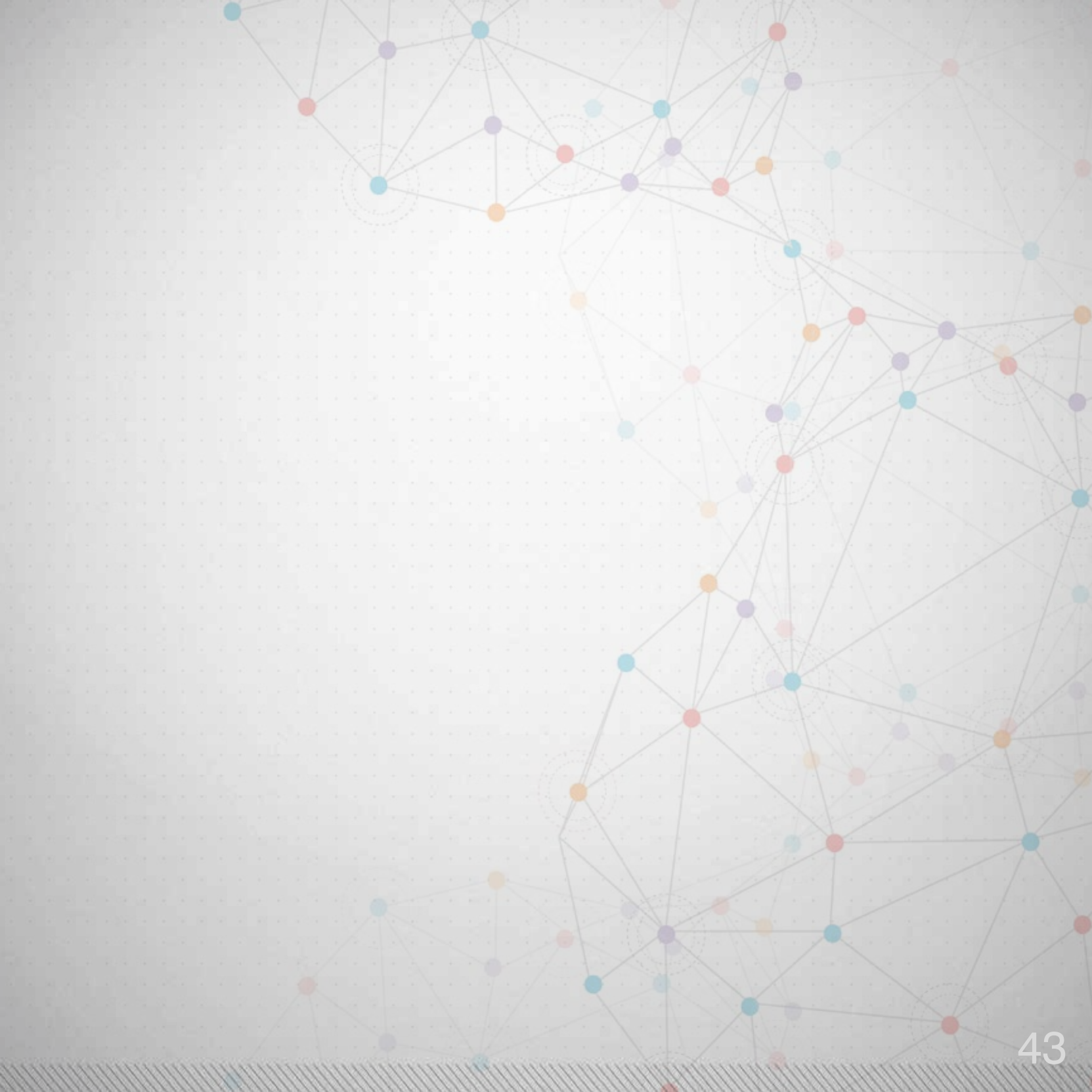
With this project planned between Altınova and Küçükkuyu, a comfortable and rapid transportation will be provided at Bay Line that has a high tourism potential.

A complex network diagram with numerous nodes and connecting lines. The nodes are colored in red, blue, orange, and purple. Some nodes are highlighted with concentric dashed circles. The background is a light gray grid.

# Incentives

**The most advantageous incentive region among  
the provinces neighboring the Aegean or the Marmara Seas**







## **Agriculture and Rural Development Support Institution (TKDK)**

Agriculture and Rural Development Support Institution provides support to investors to provide sustainable development in Turkey, serve priority goals and to ensure enterprises in the region can meet European Union Standards. Financial contribution is provided from the fund co-financed by the European Union and Turkish Republic. Investment support is non-repayable.

### **Provided Support Topics**

- ▶ **Enterprises producing and processing milk, red meat, broiler and eggs**
- ▶ **Enterprises producing and processing agricultural products**
- ▶ **Enterprises producing, processing and marketing bee products**
- ▶ **Marine breeders and marine product producers**
- ▶ **Enterprises operating in ornamental plants, medicinal and aromatic plants**





Ministry of Industry and Technology provides support for investments in order to reduce regional development differences, increase value added investments, improve production and employment figures, and expand R&D efforts which would increase international competitive power.

## REGIONAL INCENTIVE PRACTICES

### ► Customs Tax Exemption

Machinery and equipment to be imported for the investment which will benefit from this incentive are exempt to customs tax.

### ► VAT Exemption

Machinery and equipment to be purchased for the investment which will benefit from this incentive are exempt from VAT.

### ► Insurance Premium Employer Share Support

Insurance premium employer share accrued as a result of additional employment created within the scope of the investment is paid by the Ministry; not to exceed minimum wage at the time per employee.

### ► Tax Reduction

In investments subject to incentives, income and corporate tax are paid with reductions at rates stipulated separately for regions the investment is made in.

### ► Investment Site Allocation

In investments realized with incentive certificates, free site allocation can be made in order to hasten the investment in some cases.

### ► Interest Support

In investment loans with at least one year maturity to be used within the scope of regional investment incentive, interest reduction support is provided.

**Investments in  
Agriculture and  
Industrial Sectors based on  
Agricultural Products  
in Balıkesir benefit  
from Region-3  
Incentives**





## Ministry of Agriculture and Forestry

### ► Husbandry Support

Ministry of Agriculture and Forestry provides support per livestock each year to popularize animal husbandry.

Support subjects are: milch and combined species and their hybrids and fatling species and their hybrids, breeder buffalo, breeder sheep-goat, feeding material production.

### ► Diesel Fuel, Fertilizer and Soil Analysis Support

Farmers are provided with diesel oil, fertilizer and soil analysis support each year per decare for increasing modern agriculture activities and efficiency in agriculture.

Support subjects are: Landscape and ornamental plants, special grazing, meadow and forestry assets areas, cereals, forage plants, legume family, tuber crops, fruit and vegetable areas, oilseeds and industry plants.

### ► Organic Agriculture and Good Agriculture Support

Support is provided to increase organic agriculture and good agricultural practices of producers.

Support subjects are fruits, vegetables, arable crops, breeder cow, buffalo, calf, breeder sheep, goat, hive with bees, greenhouse, ornamental plants, medical aromatic plants; and support is provided per animal or decare.

### ► Certified Seed and Sapling Use and Production Support

Apart from these support types, milk analysis, raw milk, dry milk, animal disease indemnity, disease free processing, certified business, hive bee and marine products supports are available.





Ziraat Bank provides loan support in various subjects to people occupied in agriculture and husbandry to support agricultural development.

## ► Vegetative Production Loans

- Greenhouse
- Good Agricultural Practices
- Organic Agriculture
- Modern Pressure Irrigation
- Agriculture Machinery
- Harvest and Marketing
- Land Purchase
- Certified Seed, Seedling and Sapling Production
- Perennial Animal Feed Plant Production

## ► Livestock Loans

- Breeder Milch Cow
- Bovine and Ovine Dairy Animal
- Breeder Heifer and Fatling Cow Breeding
- Bovine and Ovine Fatling
- Breeder Poultry Raising
- Beekeeping

## ► Marine Products

- Marine Product Hunting
- Marine Product Breeding





## **South Marmara Development Agency Supports**

South Marmara Development Agency (GMKA) provides grants to companies registered to Çanakkale and Balıkesir through “Call for Proposals” method.

Call for proposals is a support type where companies within a specific support program can submit project proposals within specified subjects and conditions. The support programs, which can be applied for at certain times of the year, have so far provided companies with support in developing agriculture based industry, processing agricultural products and producing machinery, and equipment for agriculture and food sectors. Subjects and sectors to be supported may change each year depending on the program.





# South Marmara Development Agency is by Your Side with Balıkesir Investment Support Office

South Marmara Development Agency Balıkesir Investment Support Office operates to improve investment environment of the province, attracting investment by promoting investment environment through various media and to support investors who decided to invest in the province in investment processes.

## **Within the scope of these activities, Investment Office;**

- ▶ Informs investors in areas they need
- ▶ Conducts analyses, reports, inventory studies on business and investment environment of the province and share these studies with investors
- ▶ Supports investors in finding lands suitable for investment
- ▶ Follows permit and license processes for investments
- ▶ Organizes events promoting investment environment
- ▶ Prepares and practices strategies to improve business and investment environment of the province and improve coordination between the agencies the investor deals with undertakes studies.



## **Investment Support Office Services**

### ***Balıkesir Investment Support Office***

*Works to improve business and investment environment of the province, promote investment opportunities to investors to attract more investments and to direct and inform investors.*

***Balıkesir Investment Support Office serves the investors with;***

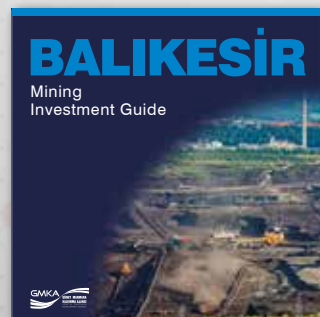
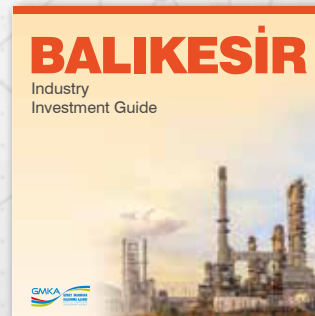
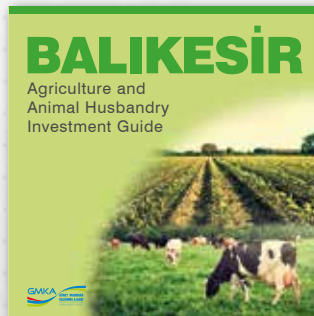
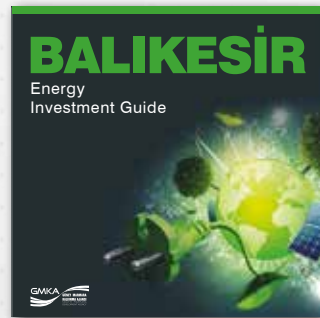
*Qualified staff*

*Strong institutional structure*

*Strong communication network between institutions*

## Introducing the Provincial Investment Climate

*In order to promote business and investment environment of the province, and to attract investors, events such as domestic and international conferences, fairs, seminars, meetings, business trips are organized and participated in. Written or visual materials are prepared to promote investment opportunities of the province to investors.*







## Inventory of Lands Available for Investment

Agency supports investors in finding suitable lands for their investments. Furthermore, landowners who wish to sell or rent their lands to investors visit the Agency and enrich the land inventory.

PUBLIC LANDS

PRIVATE LANDS

ORGANIZED  
INDUSTRIAL ZONES



## Informing-Guiding Services at Investment Support Office



Balikesir Investment Support Office informs and guides investors in issues such as priorities, scope, eligibility conditions, application documents for fiscal and technical supports by public and private sector at local or central level.

Additionally investors are provided with information and guidance services they need before and during investment processes, as well as during operation phase.

Researches are conducted on prominent sectors in the province; data is gathered on topics which influence investment decisions such as raw materials, energy, logistics, and labor force; and put into the use of investors.

Various trainings are provided under supervision of qualified trainers in line with the needs of the enterprises operating in Balikesir.



## **Investments Followed Centrally**

By following the bureaucratic processes centrally in the name of investors, permits and licenses for the investors are obtained as quickly as possible.



# **Food Approval**

# **Food Registration**



**Environmental  
Impact  
Assessment**

**Business  
License**

**Construction  
License**

**Servitude**

## Relevant Institutions

### Ministry of Agriculture and Forestry



**Telephone:** (0312) 287 33 60

**Web address:** [tarim.gov.tr](http://tarim.gov.tr)

### Balıkesir Governorship



**Telephone:** (0266) 245 13 01

**Web address:** [balikesir.gov.tr](http://balikesir.gov.tr)

### Balıkesir Provincial Directorate of Agriculture and Forestry



**Telephone:** (0266) 246 26 70

**Web address:** [balikesir.tarim.gov.tr](http://balikesir.tarim.gov.tr)

### Balıkesir Metropolitan Municipality



**Telephone:** (0266) 239 15 10

**Web address:** [balikesir.bel.tr](http://balikesir.bel.tr)

### Balıkesir Chamber of Industry



**Telephone:** (0266) 281 11 80

**Web address:** [bso.org.tr](http://bso.org.tr)

### Balıkesir Chamber of Commerce



**Telephone:** (0266) 244 68 68

**Web address:** [bato.org.tr](http://bato.org.tr)

## Relevant Institutions

### South Marmara Development Agency



**Telephone:** (0266) 246 10 00  
**Web address:** gmka.gov.tr

### Ministry of Industry and Technology



**Telephone:** 444 61 00  
**Web address:** sanayi.gov.tr

### Balıkesir Provincial Directorate of Environment and Urbanization



**Telephone:** (0266) 224 47 15  
**Web address:** balikesisir.csb.gov.tr

### Agriculture and Rural Development Support Institution - Balıkesir Provincial Coordinator



**Telephone:** (0266) 245 58 61  
**Web address:** balikesisir.tkd.gov.tr

### Balıkesir Provincial Directorate of Science, Industry and Technology



**Telephone:** (0266) 243 02 52  
**Web address:** balikesisir.sanayi.gov.tr

### Balıkesir University



**Telephone:** (0266) 612 14 00-08  
**Web address:** balikesisir.edu.tr



## Relevant Institutions

### Bandırma Onyedi Eylül University



**Telephone:** (0266) 717 01 17  
**Web address:** bandirma.edu.tr

### Sheep Breeding Research Institute



**Telephone:** (0266) 738 00 80 - 81  
**Web address:** [arastirma.tarim.gov.tr/koyunculuk](http://arastirma.tarim.gov.tr/koyunculuk)

### Edremit Olive Production Station Directorate



**Telephone:** (0266) 373 13 71  
**Web address:** [tarim.gov.tr/BUGEM/edremitzeytin](http://tarim.gov.tr/BUGEM/edremitzeytin)

### Chamber of Agricultural Engineers Balıkesir Office



**Telephone:** (0266) 249 60 10  
**Web address:** [zmo.org.tr](http://zmo.org.tr)

### Chamber of Food Engineers



**Telephone:** (0312) 418 28 26  
**Web address:** [gidamo.org.tr](http://gidamo.org.tr)

### Turkish Veterinary Medical Association Balıkesir Office



**Telephone:** (0266) 245 83 37  
**Web address:** [tvhb.org.tr](http://tvhb.org.tr)





**GMKA**

SOUTH MARMARA  
DEVELOPMENT AGENCY